

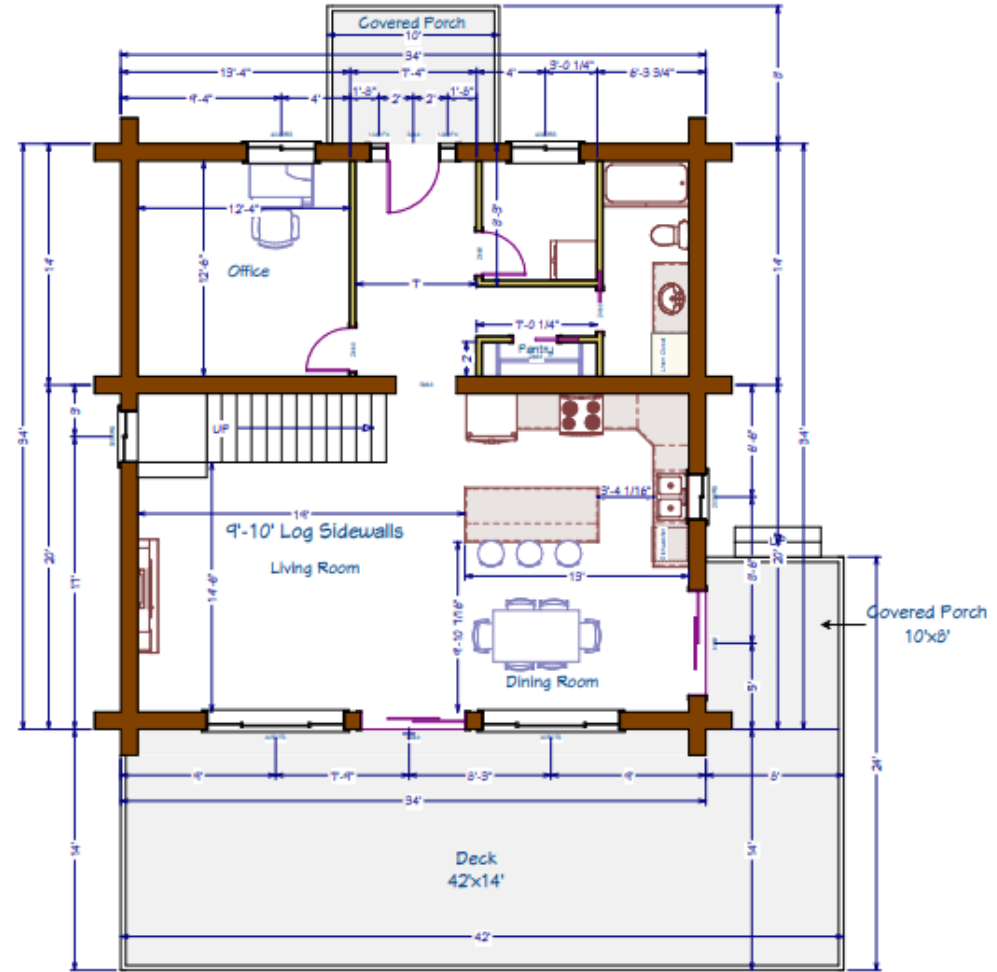
Honeymoon Cabin Floor Plan

Plenty of natural light, finished basement with windows, large open dining and living areas but closed off bedrooms for privacy.

Northwest Log Homes

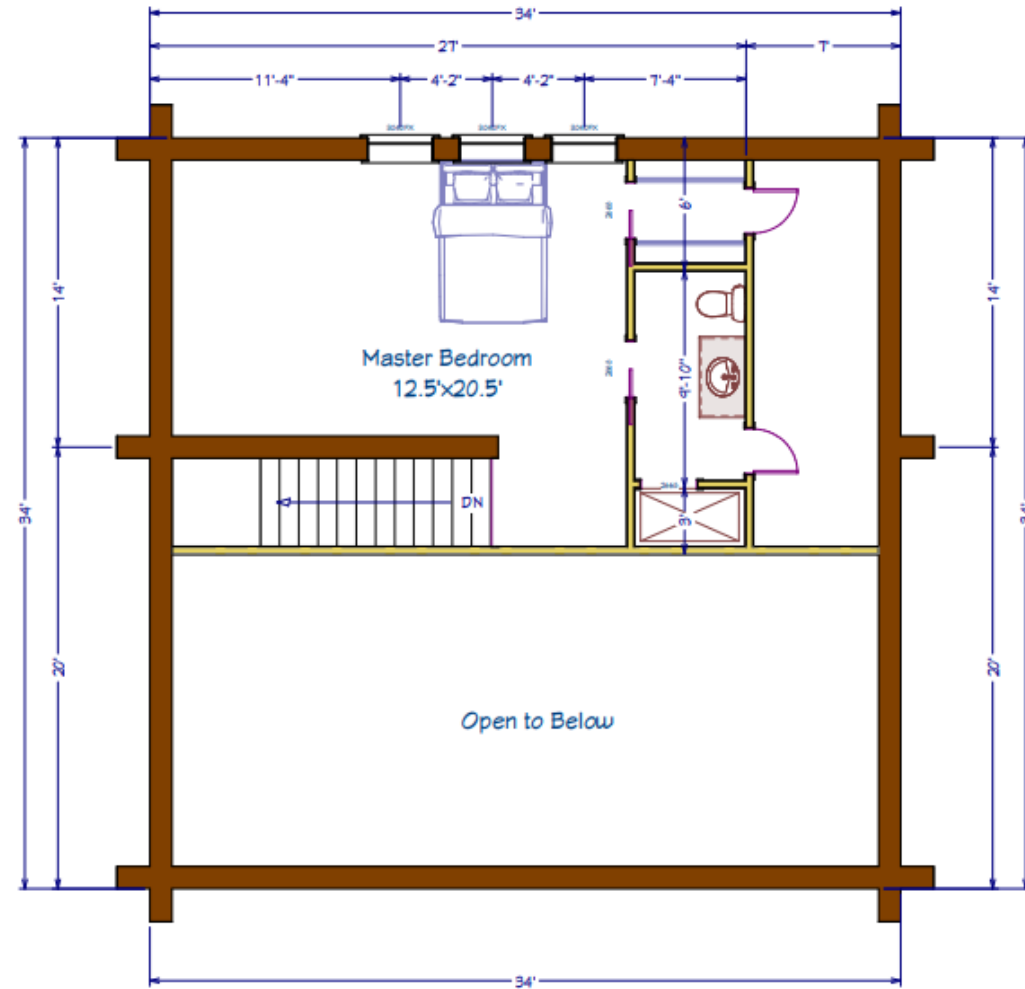
The Main Floor

With this floor plan, you have the option for bedrooms on the main floor, easy access to large entertainment areas, and a gracious kitchen layout.



Loft Floor

The loft makes for a great master bedroom, bathroom, and closet space. Or a home office if you prefer to stay downstairs.





Honeymoon Cabin



- Interested in seeing the Honeymoon Cabin in person? Appointments are required and can be worked out with Jonas.
- The house is located in Rexford, Montana.



How it works

- Our homes are full scribed (Swedish cope).
- The logs are hand peeled in our log yard and then set up before being delivered to your property.
- Once the logs are delivered to you (via log trucks), we come and set the home up.
- You can go with a log kit, dry in, or turn key design depending on your distance from our log yard in Rexford Montana.

Log kit, dry in,
and turn key
differences...

Pricing Sheet

1. Log Kit

36\$-40\$ per sq ft

INCLUDES THE FOLLOWING

- Log kit standing in our yard
- Windows and doors cut out
- Log perlin
- Log loft joist

2. Dry In

90\$-120\$ per sq ft

INCLUDES THE FOLLOWING

- Log kit delivered and set up
- Windows and doors installed
- Tongue & groove ceiling
- 2x6 rafters
- 5" spray foam insulation
- ½ in OSB sheathing
- Metal roof

3. Turn Key

180\$ & Up per sq ft

INCLUDES THE FOLLOWING

- Foundation
- Dry in (2 option)
- All of the interior finish
- Appliance allowance
- With the turn key option your home will be ready to move into

We're excited to
start working on
your dream home,
don't hesitate to
reach out for more
information.

